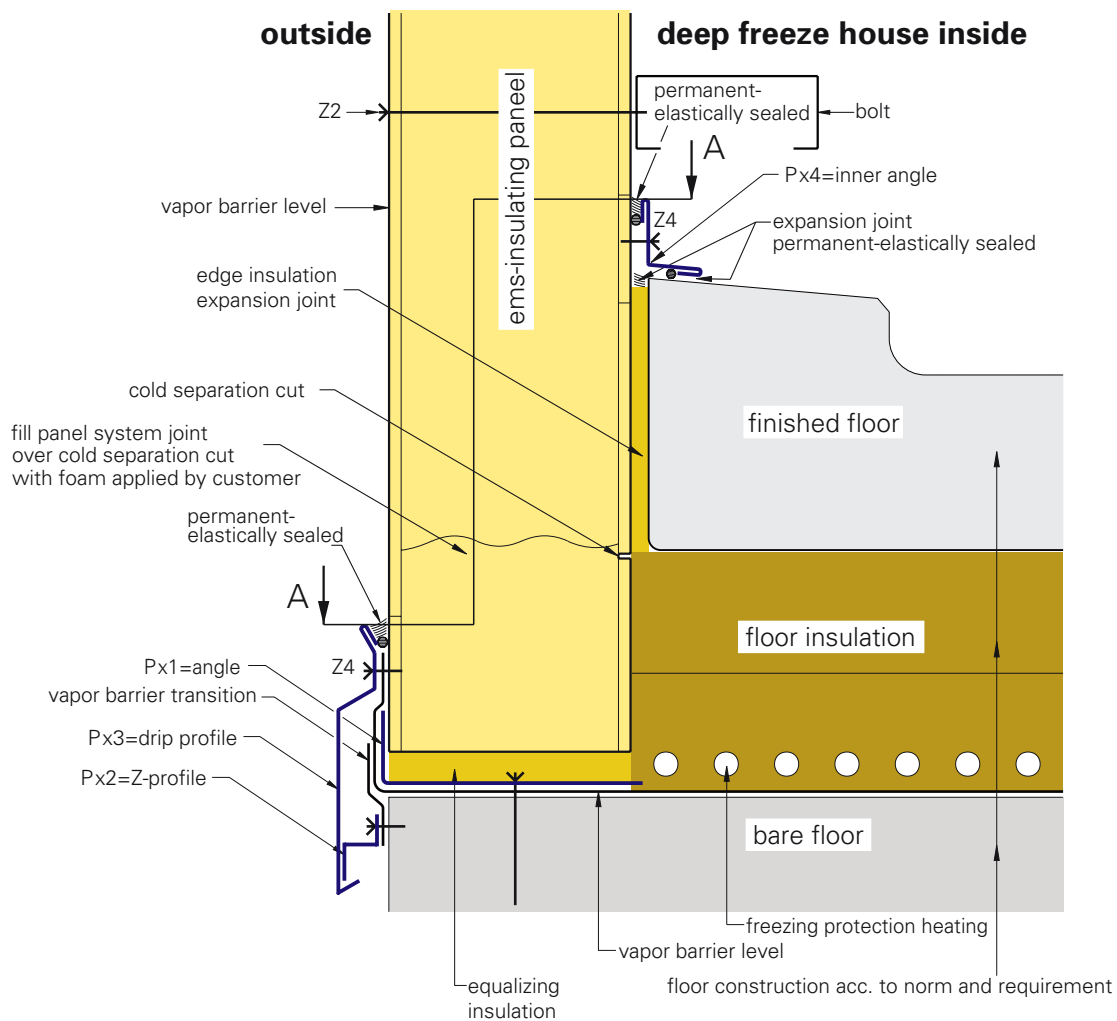
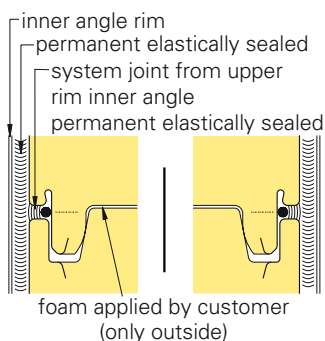


deep freeze house

foot facade (detail no. 1)



cut A-A

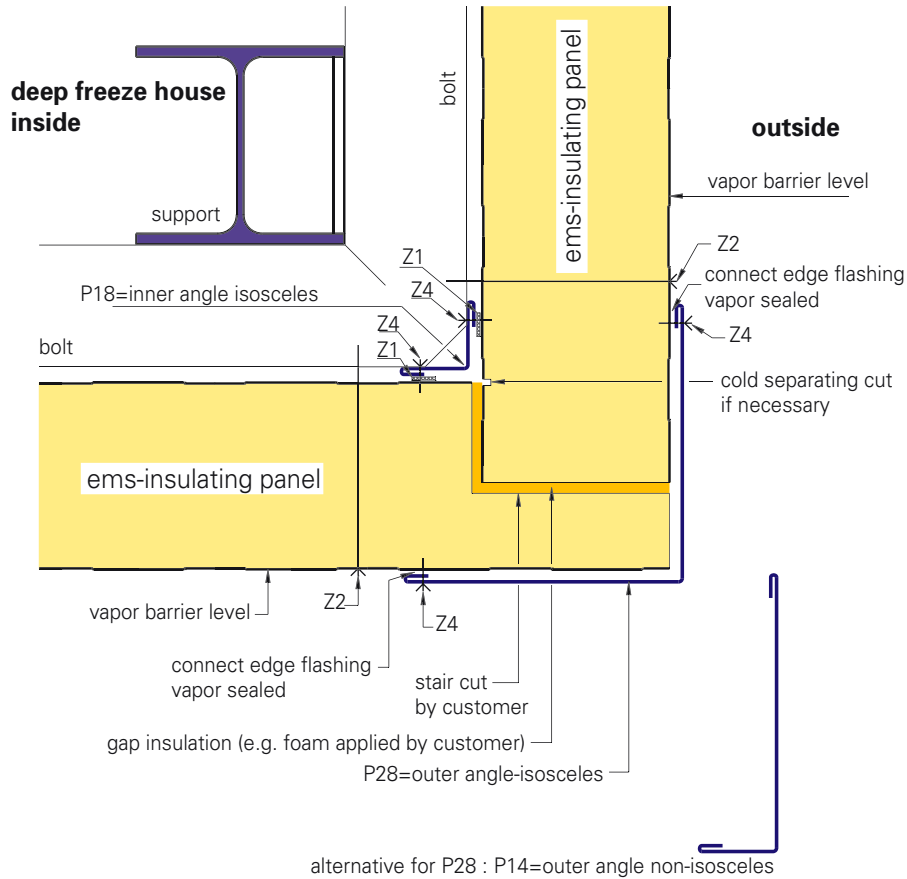


legend		
item	description	article no.
P x 1	angle	if necessary
P x 2	Z-profile	if necessary
P x 3	drip profile	if necessary
P x 4	inner angle	if necessary
Z 2	fastener e.g.: JA3-6,5xL-E/JZ3-6,3xL-E	
Z 4	connector e.g.: JA3-6,5x19-E16/nut	

Character, arrangement, quantity of the fastener, connector, belts etc.: designated according to statics and technical regulations. General remark (liability): The indications in these schematic diagrams serve for description. Conventions concerning certain characteristics or certain applications always require special written agreements. Status 01/2000 - subject to technical modifications.

CONSTRUCTION DETAILS

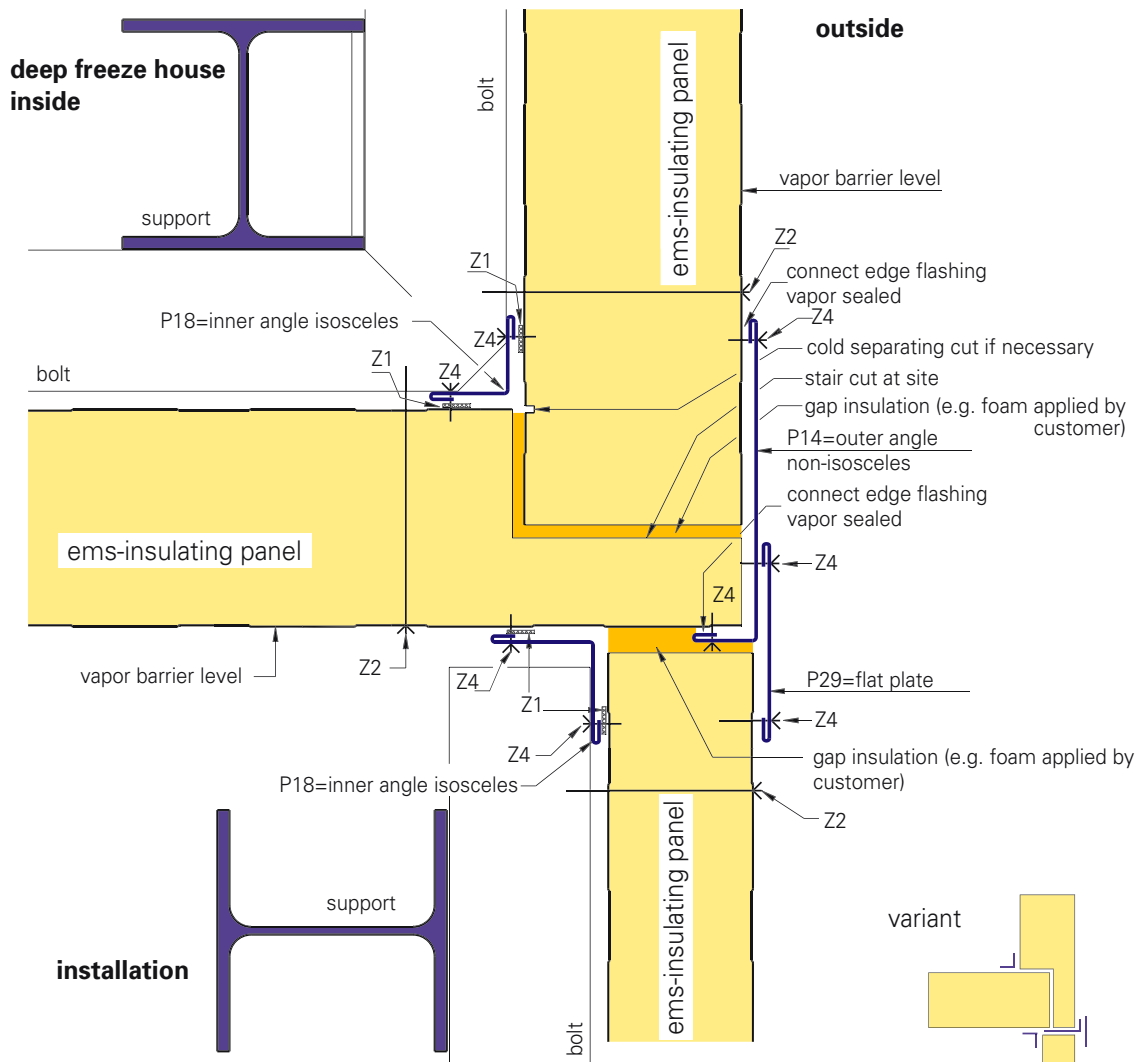
edge (detail no. 2)



legend		
item	description	article no.
P 14	outer angle non-isosceles	71031 ff.
P 18	inner angle isosceles	71140 ff.
P 28	outer angle isosceles	71041 ff.
Z 1	compression gasket self-adhesive on one side e.g.: 15x10/2	
Z 2	fastener e.g.: JA3-6,5xL-E/JZ3-6,3xL-E	
Z 4	connector e.g.: JA3-6,5x19-E16/nut	

Character, arrangement, quantity of the fastener, connector, belts etc.: designated according to statics and technical regulations. General remark (liability): The indications in these schematic diagrams serve for description. Conventions concerning certain characteristics or certain applications always require special written agreements. Status 01/2000 - subject to technical modifications.

edge with T-connection (detail no. 3)

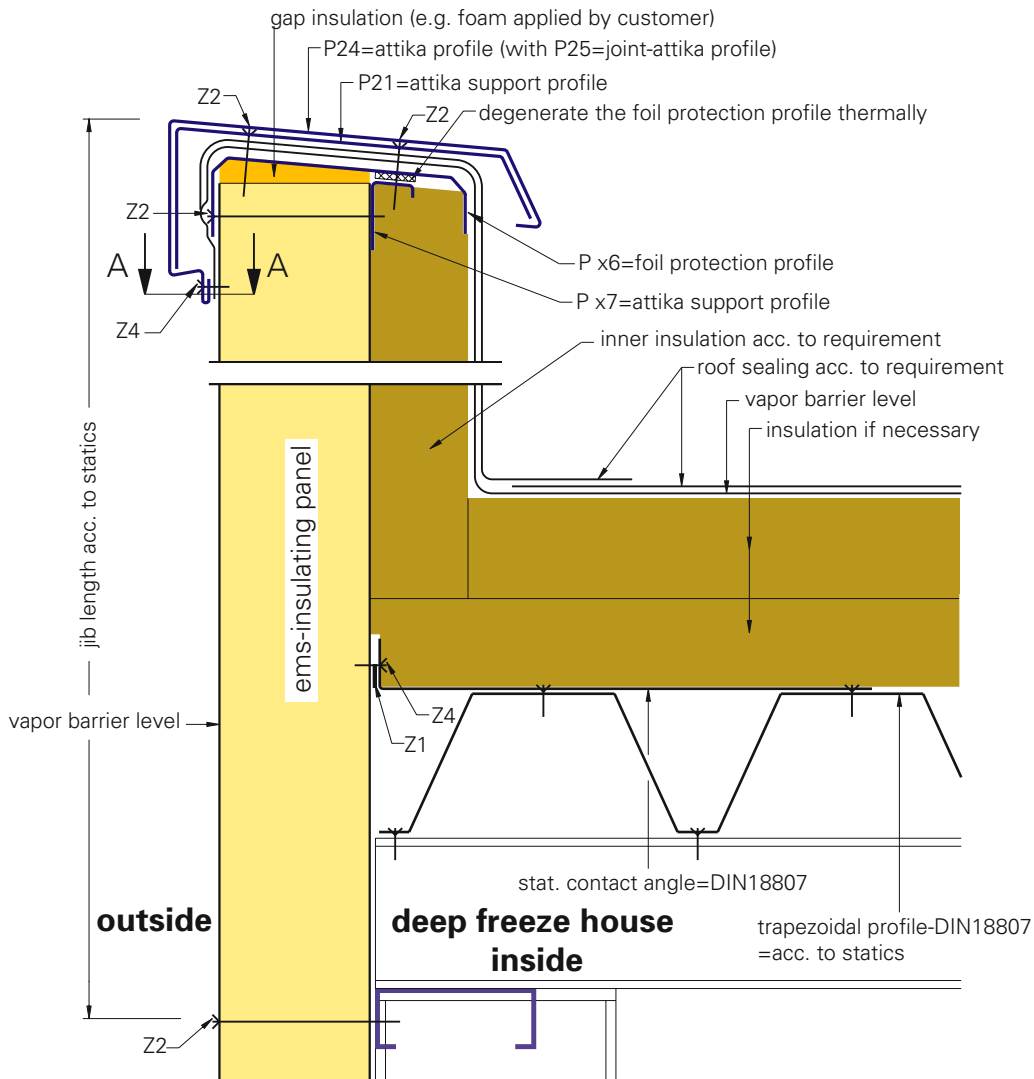


components and executions analogous to above drawing

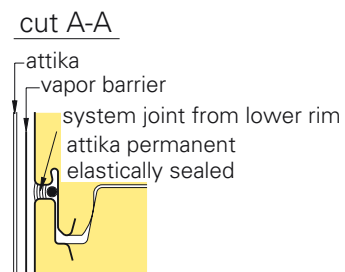
legend		
item	description	article no.
P 14	outer angle non-isosceles	71031 ff.
P 18	inner angle isosceles	71140 ff.
P 29	flat plate	71050 ff.
Z 1	compression gasket self-adhesive on one side e.g.: 15x10/2	
Z 2	fastener e.g.: JA3-6,5xL-E/JZ3-6,3xL-E	
Z 4	connector e.g.: JA3-6,5x19-E16/nut	

Character, arrangement, quantity of the fastener, connector, belts etc.: designated according to statics and technical regulations. General remark (liability): The indications in these schematic diagrams serve for description. Conventions concerning certain characteristics or certain applications always require special written agreements. Status 01/2000 - subject to technical modifications.

attika (detail no. 4)

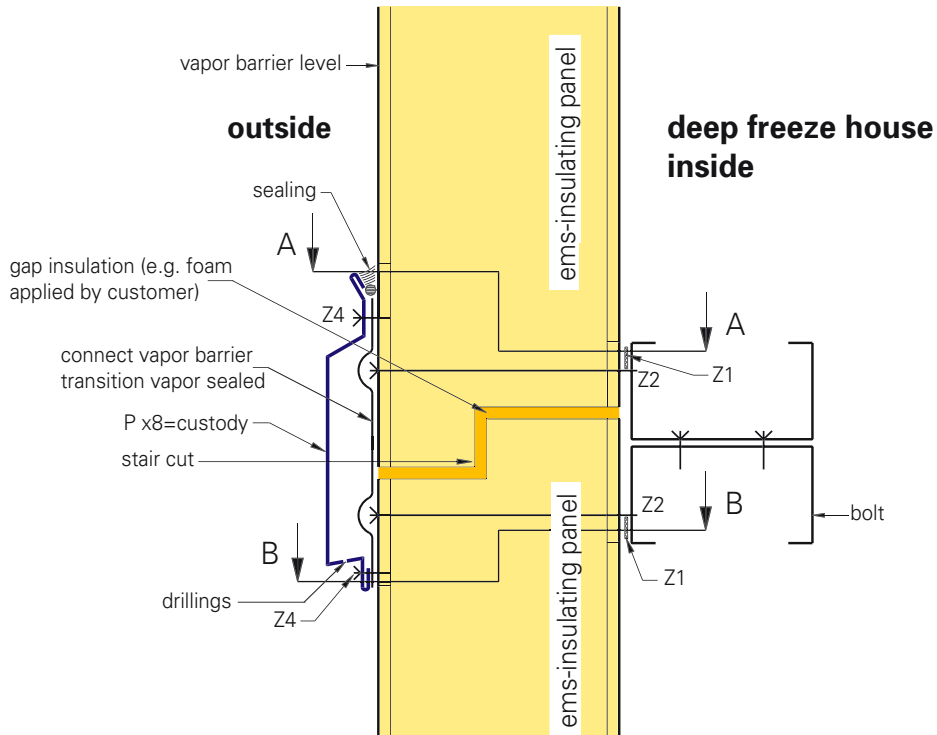


legend		
item	description	article no.
P x6	foil protection profile	if necessary
P x7	attika support profile	if necessary
P 21	attika support profile	71191 ff.
P 24	attika profile	71186 ff.
P 25	joint attika profile	71161 ff.
Z 1	compression gasket self-adhesive on one side e.g.: 15x10/2	
Z 2	fastener e.g.: JA3-6,5xL-E/JZ3-6,3xL-E	
Z 4	connector e.g.: JA3-6,5x19-E16/nut	

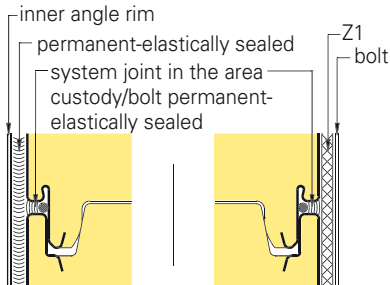


Character, arrangement, quantity of the fastener, connector, belts etc.: designated according to statics and technical regulations. General remark (liability): The indications in these schematic diagrams serve for description. Conventions concerning certain characteristics or certain applications always require special written agreements. Status 01/2000 - subject to technical modifications.

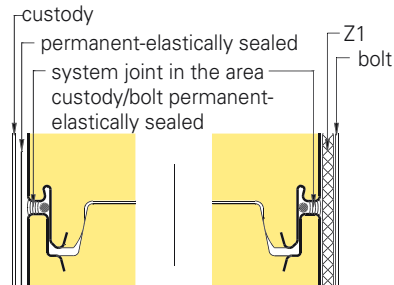
transverse joint (detail no. 5)



cut A-A



cut B-B

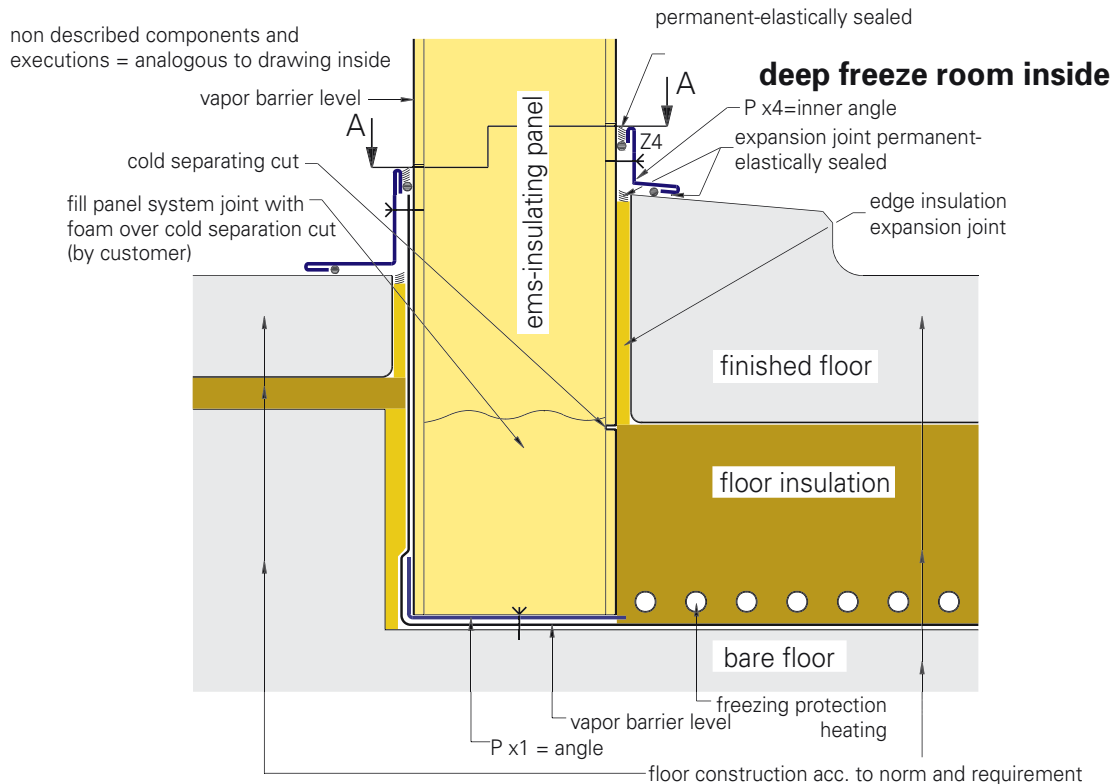


legend

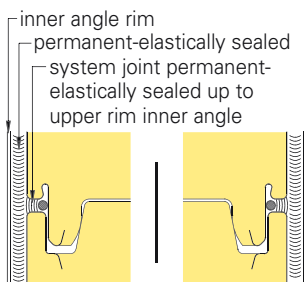
item	description	article no.
P x8	custody	if necessary
Z 1	compression gasket self-adhesive on one side e.g.: 15x10/2	
Z 2	fastener e.g.: JA3-6,5xL-E/JZ3-6,3xL-E	
Z 4	connector e.g.: JA3-6,5x19-E16/nut	

Character, arrangement, quantity of the fastener, connector, belts etc.: designated according to statics and technical regulations. General remark (liability): The indications in these schematic diagrams serve for description. Convenants concerning certain characteristics or certain applications always require special written agreements. Status 01/2000 - subject to technical modifications.

foot with floor insulation (detail no. 6)



cut A-A



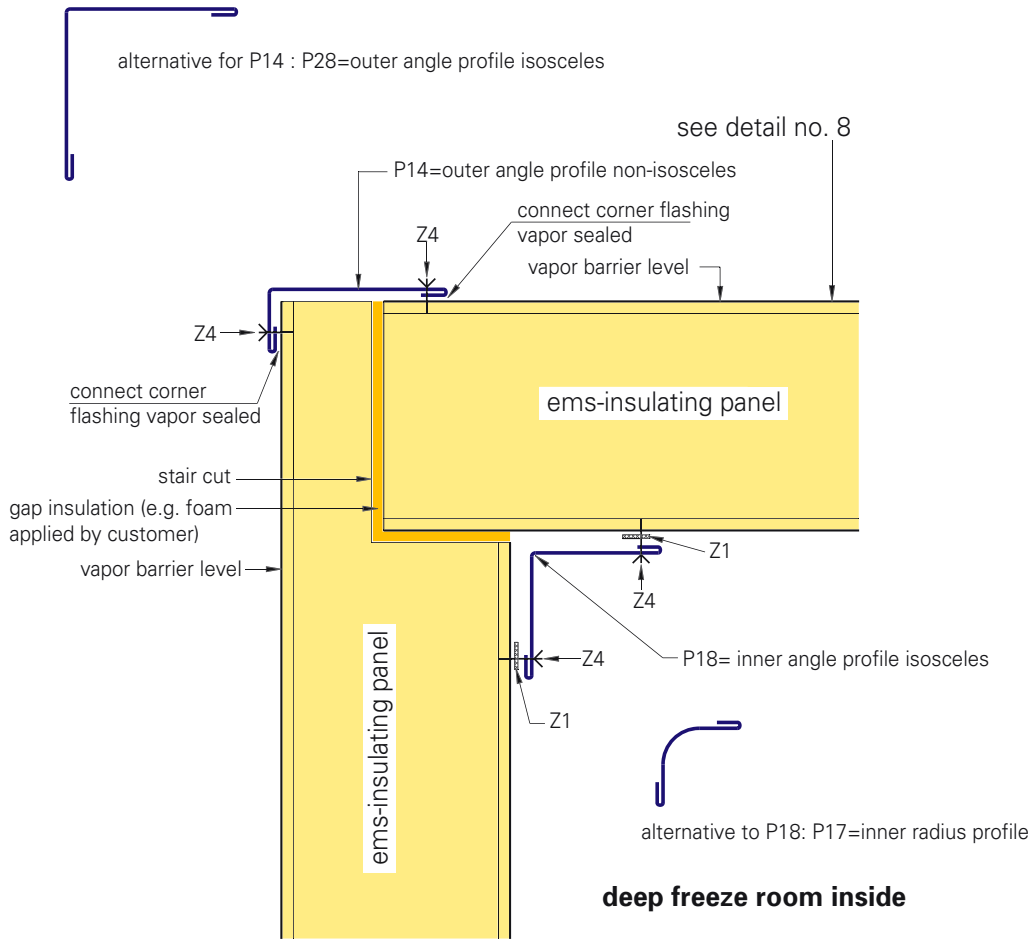
legend

item	description	article no.
P x1	angle	if necessary
P x4	inner angle	if necessary
Z 4	connector e.g.: JA3-6,5x19-E16/nut	

Character, arrangement, quantity of the fastener, connector, belts etc.: designated according to statics and technical regulations. General remark (liability): The indications in these schematic diagrams serve for description. Conventions concerning certain characteristics or certain applications always require special written agreements. Status 01/2000 - subject to technical modifications.

deep freeze room

wall-ceiling connection (detail no. 7)



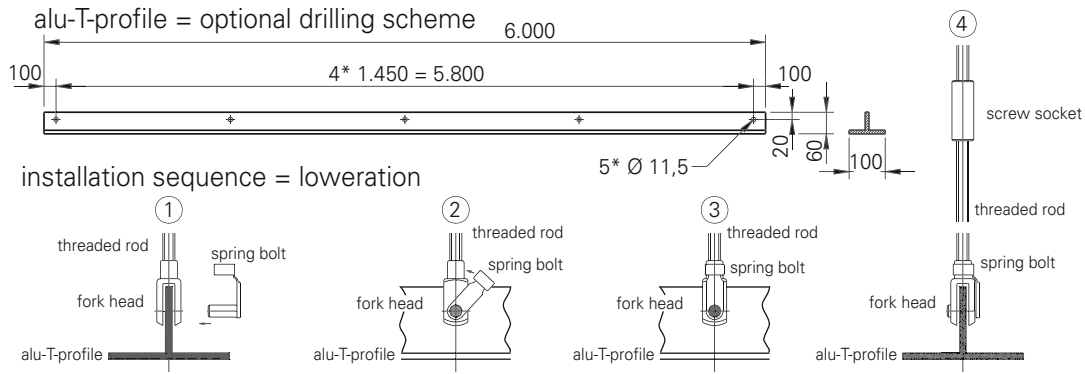
legend

item	description	article no.
P 14	outer angle profile non-isosceles	71031 ff.
P 17	inner radius profile	71136
P 18	inner angle profile isosceles	71140 ff.
P 28	outer angle profile isosceles	71041 ff.
Z 1	compression gasket self-adhesive on one side e.g.: 15x10/2	
Z 4	connector e.g.: JA3-6,5x19-E16/nut	

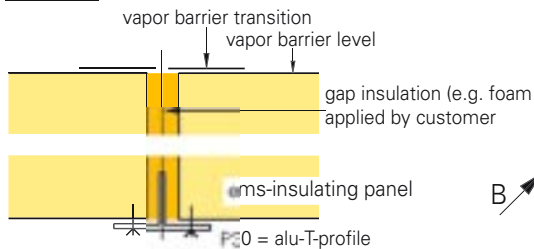
CONSTRUCTION DETAILS

Character, arrangement, quantity of the fastener, connector, belts etc.: designated according to statics and technical regulations. General remark (liability): The indications in these schematic diagrams serve for description. Conventions concerning certain characteristics or certain applications always require special written agreements. Status 01/2000 - subject to technical modifications.

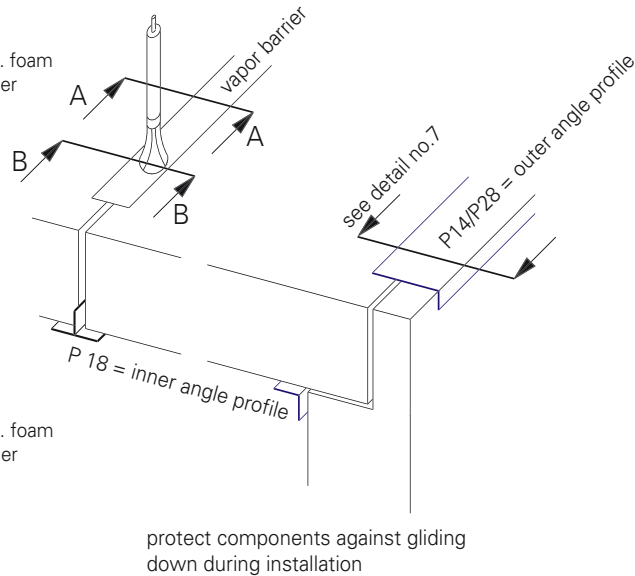
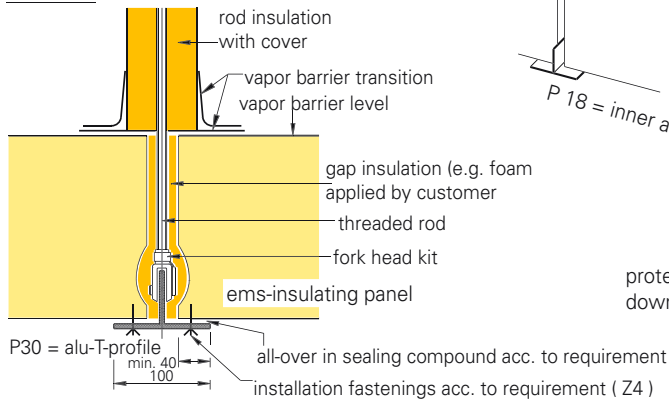
lowered ceiling (detail no. 8)



cut A-A



cut B-B

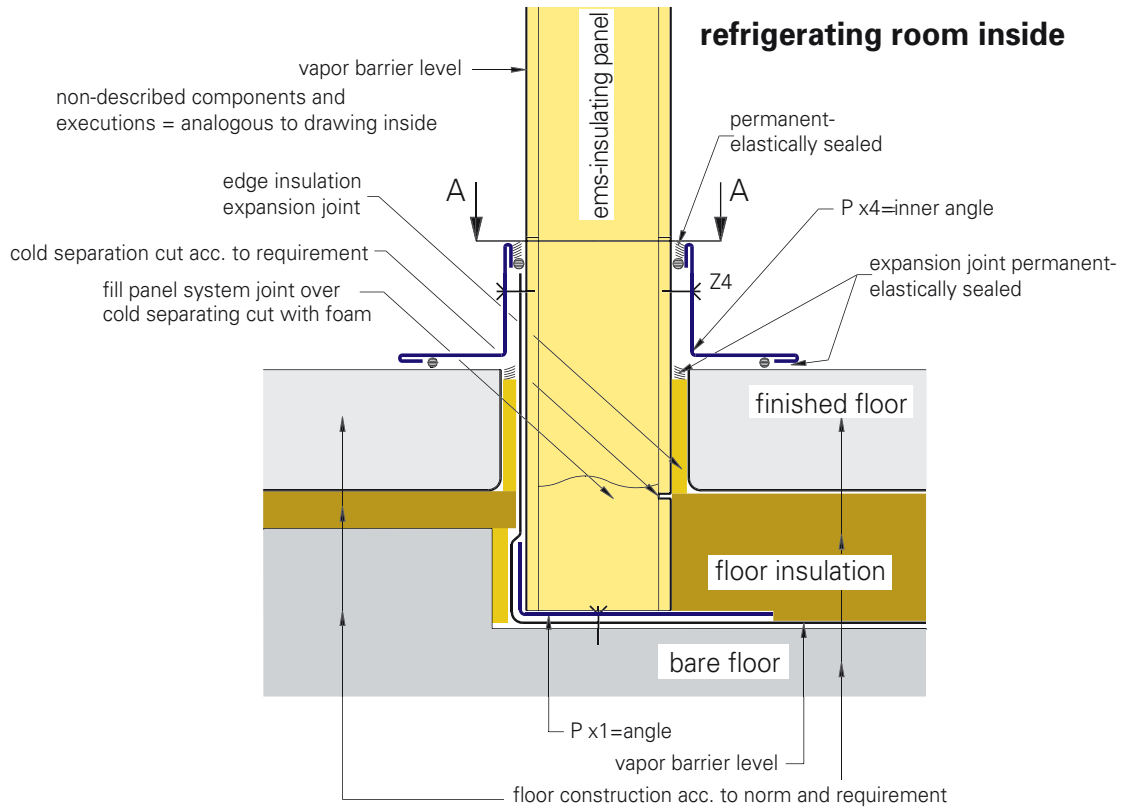


refrigerating room / deep freeze room inside

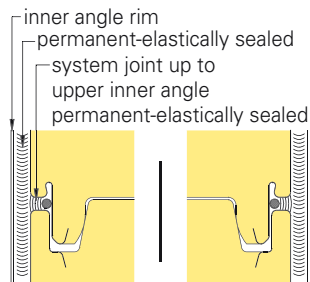
legend		
item	description	article no.
P 30	alu-T-profile	25660
P 31	threaded rod M 10 DIN 975 RS/LS	13262/13263
P 32	screw socket M 10 RS/LS	13264/13265
P 33	fork head RS/LS	20797/20800
P 34	spring bolt	20798
	RS= right-hand thread / LS= left hand thread	
Z 4	fastener e.g.: JA3-6,5x19-E16/nut	

Character, arrangement, quantity of the fastener, connector, belts etc.: designated according to statics and technical regulations. General remark (liability): The indications in these schematic diagrams serve for description. Conventions concerning certain characteristics or certain applications always require special written agreements. Status 01/2000 - subject to technical modifications.

foot with floor insulation (detail no. 9)



cut A-A



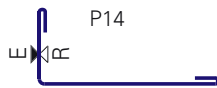
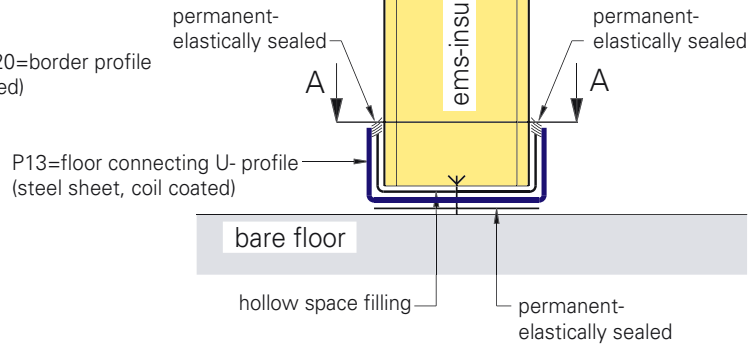
legend		
item	description	article no.
P x1	angle	if necessary
P x4	inner angle	if necessary
Z 4	connector e.g.: JA3-6,5x19-E16/nut	

Character, arrangement, quantity of the fastener, connector, belts etc.: designated according to statics and technical regulations. General remark (liability): The indications in these schematic diagrams serve for description. Conventions concerning certain characteristics or certain applications always require special written agreements. Status 01/2000 - subject to technical modifications.

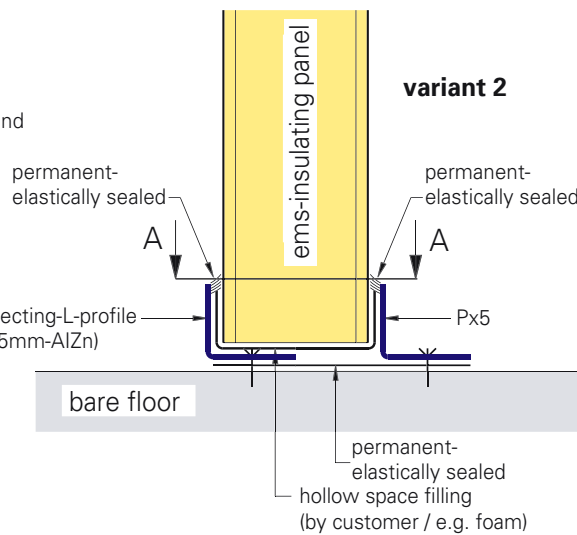
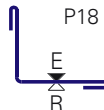
foot without floor insulation (detail no. 10)



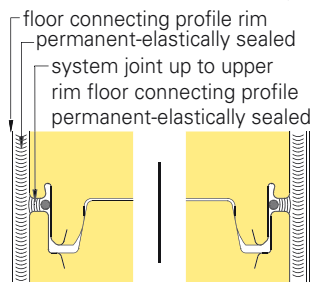
alternative for P13: P20=border profile (steel sheet, coil coated)



alternative for Px5:
P14=outer angle profile non-isosceles and
P18=inner angle profile isosceles
(steel sheet, coil coated)



Schnitt A-A



legend		
item	description	article no.
P 13	floor connecting-U-profile	71011 ff.
P 14	outer angle profile non-isosceles	71031 ff.
P 18	inner angle profile isosceles	71140 ff.
P 20	bordering profile	71151 ff.
P x5	floor connecting-L-profile	if necessary

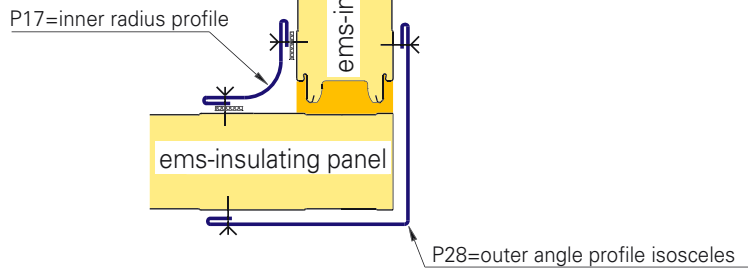
Character, arrangement, quantity of the fastener, connector, belts etc.: designated according to statics and technical regulations. General remark (liability): The indications in these schematic diagrams serve for description. Conventions concerning certain characteristics or certain applications always require special written agreements. Status 01/2000 - subject to technical modifications.

edge (detail no. 11)

refrigerating room inside

non-described components and executions = analogous to below scheme

variant 1



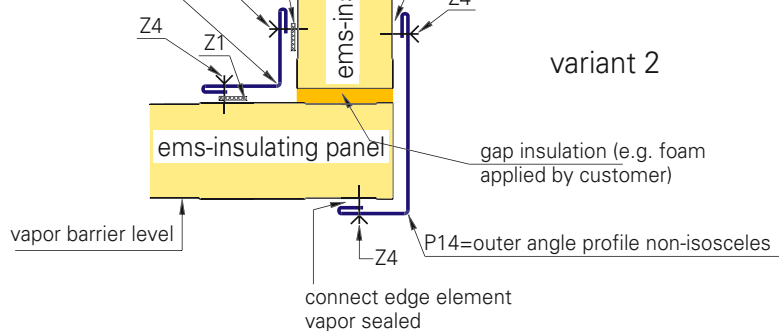
refrigerating room inside

P18=inner angle profile isosceles

vapor barrier level

connect edge element vapor sealed

variant 2

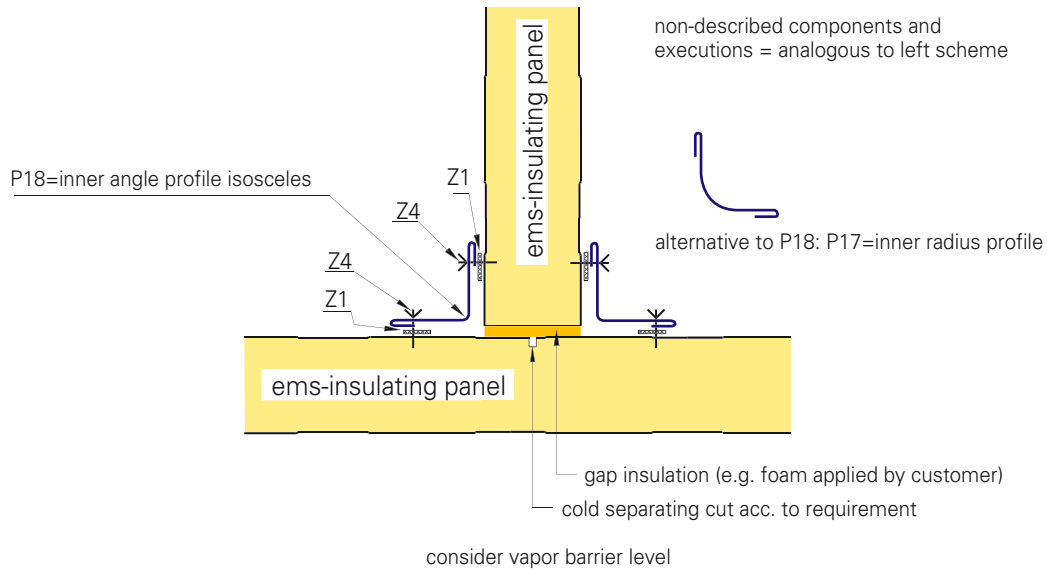


legend

item	description	article no.
P 14	outer angle profile non-isosceles	71031 ff.
P 17	inner radius profile	71136
P 18	inner angle profile isosceles	71140 ff.
P 28	outer angle profile isosceles	71041 ff.
Z 1	compression gasket self-adhesive on one side e.g.: 15x10/2	
Z 4	connector e.g.: JA3-6,5x19-E16/nut	

Character, arrangement, quantity of the fastener, connector, belts etc.: designated according to statics and technical regulations. General remark (liability): The indications in these schematic diagrams serve for description. Conventions concerning certain characteristics or certain applications always require special written agreements. Status 01/2000 - subject to technical modifications.

T-connection (detail no. 12)



legend		
item	description	article no.
P 17	inner radius profile	71136
P 18	inner angle profile isosceles	71140 ff.
Z 1	compression gasket self-adhesive on one side e.g.: 15x10/2	
Z 4	connector e.g.: JA3-6,5x19-E16/nut	

Character, arrangement, quantity of the fastener, connector, belts etc.: designated according to statics and technical regulations. General remark (liability): The indications in these schematic diagrams serve for description. Convenants concerning certain characteristics or certain applications always require special written agreements. Status 01/2000 - subject to technical modifications.